

# **How to use the SAC-2.2 with SEK'D Samplitude**

---

## SEK'D Samplitude

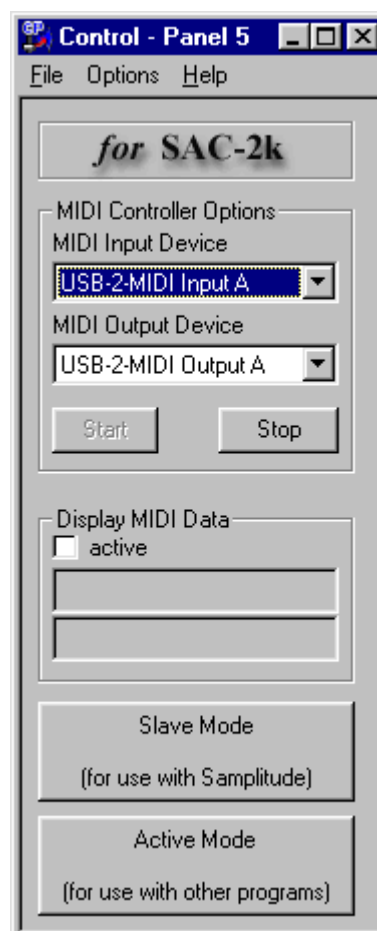
Samplitude 2496 and Samplitude Studio are supporting the SAC-2K from Version Number 5.58 on. SEK'D implementation is accomplished with the help of an Add-On program, which is available with newly purchased programs. You will find the Add-On program on the Installation CD in the file I:\Accessories\TOOLS\Radikal\_SAC\_2K, or which you can download as an update from the SEK'D Vertriebs GmbH Server.

## Installation

The Add-On Program is called CP5.EXE (Control Panel 5). During installation of the SEK'D program, this Control Panel is not automatically copied to your hard drive. Therefore, you need to copy the program from the installation CD to the Samplitude Index on your hard drive.

The installation of this program is necessary in addition to the Samplitude installation to ensure proper interaction between the SAC-2.2 and the Software. It does not matter which of the two programs you start first, however you should turn on the SAC-2.2 before starting the Control Panel program.

Once you enter the CP5.EXE command, you will see the following display:

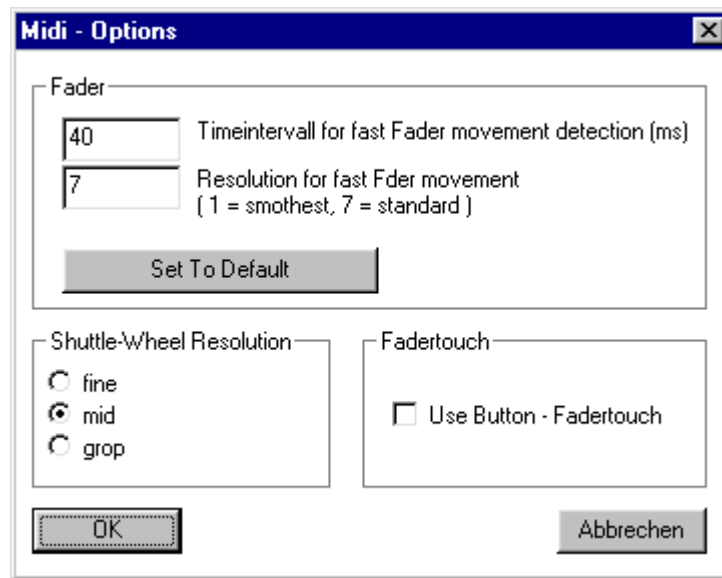


First, set the MIDI Input and Output, which the SAC-2.2 is connected to. For operation with the Samplitude software the SAC-2.2 automatically defaults to the Slave Mode. With the buttons in the lower section of the Control Panel you will be able to switch between the Slave Mode and Active Mode of the SAC-2.2. This is a useful feature, if you decide during a Samplitude session you need to work in another program. The SAC-2.2 in the active mode works as a generic MIDI control surface.

For a test you can now click on the “Display MIDI Data” control window of the Software.

When touching a control element on the SAC-2K, the according MIDI message will be displayed in the text window.

You also have the ability to configure the SAC-2K according to your needs. To do so, please select the entry „Performance“ in the „Options“ Menu. This will prompt the following dialog-window:



In this Dialog box activate the entry „Use Button-Fadertouch“. There is no need to touch the other parameters, unless you want to change the Jog wheel resolution or the reaction time of the faders.

Now click the „OK“ button in the dialog box and start the Samplitude program

## Tips regarding operation

At the time this Manual was printed the following features were already supported:

- 1.) Transport ([Start]/[Stop]/[Pause]/[FastForward]/[Rewind])
- 2.) Store Marker ([Store Marker] + [Number 0-9]), Call-Up Marker [Number 0-9] Mark Section between two Markers [Number 0-9] + [To] + [Number 0-9]
- 3.) Scrub Mode activation, forward and backward scrubbing
- 4.) Master Volume Fader
- 5.) Master EQ's on Encoders 9-11
- 6.) Volume and Panorama Automation on Faders/Encoders 1-8
- 7.) Automation Aktivation via [Select 1-8]
- 8.) Solo/Mute 1-8
- 9.) PAN/EQ Reset using push button fuction of the Encoders
- 10.) Time display in SMTPE timecode and CD MSF

You will find a text data bank by SEK'D in the CD Index of the CP5 Program, which provides additional information regarding operation.